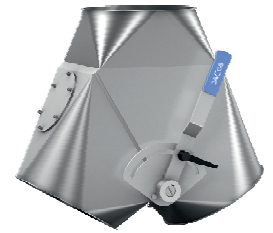
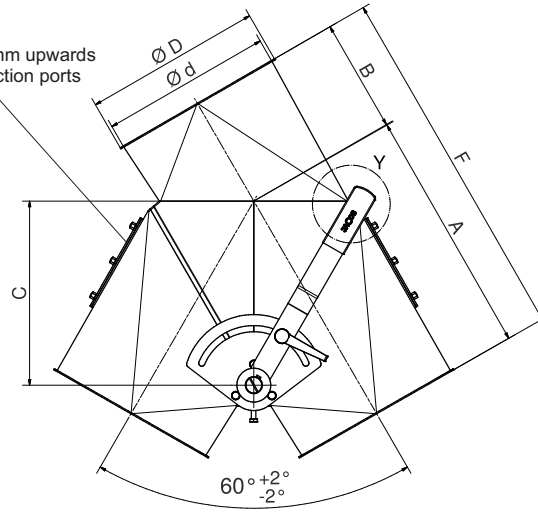
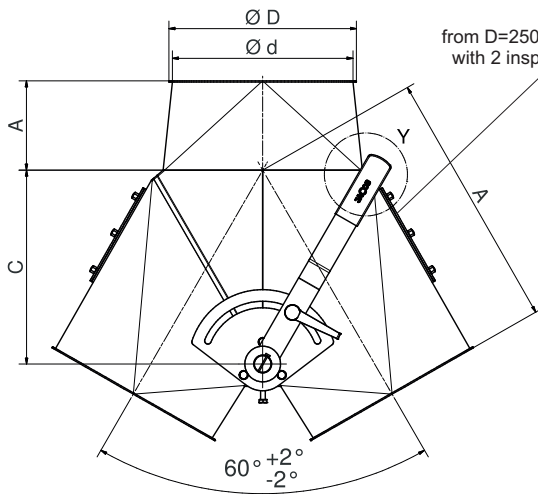
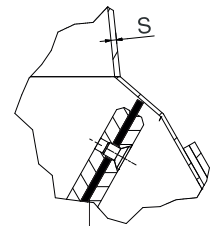


Symmetrical version

Asymmetrical version

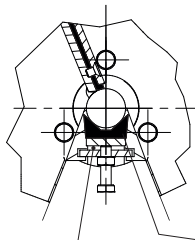


Detail Y

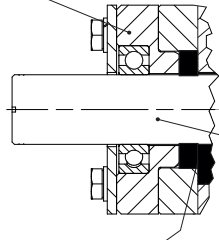


Inner seal made from silicone

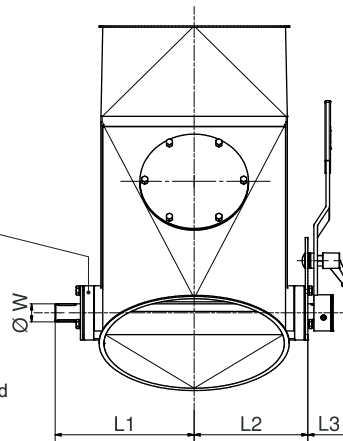
Shaft at both sides with ball-bearings and ring-seal made from Silicone



Opening for dismantling of inner flap



Adjustable moulded cord made from Silicone



Installing position:

For bulk-goods in respect of the flow characteristics of transported goods in ventilation systems to be chosen free.

Areas of use:

For dust-tight conveying of bulk-goods by gravity and vacuum-conveying in ventilation systems-up to pressure-difference of approx. 0,1 bar.

Please request for special applications.

Pipe diameter tolerance and roundness tolerance to DIN EN 10296-1  
Lengths and angles – DIN ISO 2768-1 – Tolerance class V  
The article number refers to powder-coated version

Pipe		Ø 100	Ø 120	Ø 150	Ø 200	Ø 250	Ø 300
symmetrical version	Articel-no.	12101508	12121508	12151508	12201508	12251508	12301508
	A	220	240	250	300	370	435
	B	65	70	75	105	130	150
	C	128	145	168	218	277	326
asymmetrische version	Articel-no.	12101509	12121509	12151509	12201509	12251509	12301509
	A	220	240	250	300	370	435
	B	100	110	115	140	170	200
	C	128	145	168	218	277	326
	F	320	350	365	440	540	635
	Ø d	99	119	149	199	249	299
	Ø D	115	135	165	215	265	315
	S	2	2	2	2	2	2
	Ø W	20	20	20	20	30	30
	L1	117	127	142	164	205	230
	L2	82	92	107	132	160	185
	L3	75	75	75	75	75	75
	Weight in kg	-	-	-	-	-	-

Denomination:

**Two-way distributors 60°,  
hand-operated**

Date: 06/14

Datasheet-no. 9/10

Rev. 0