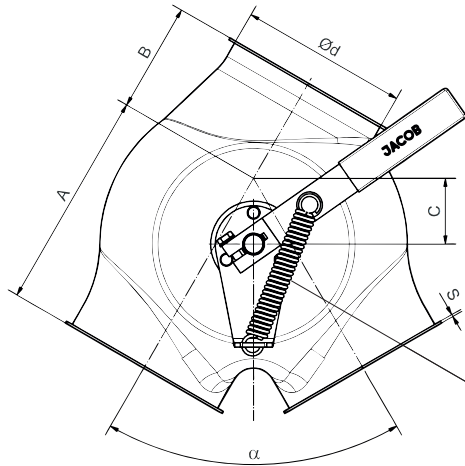
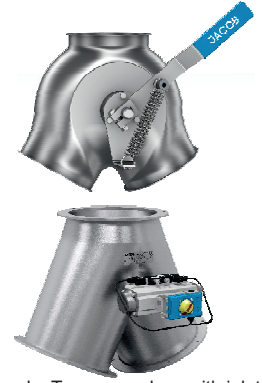
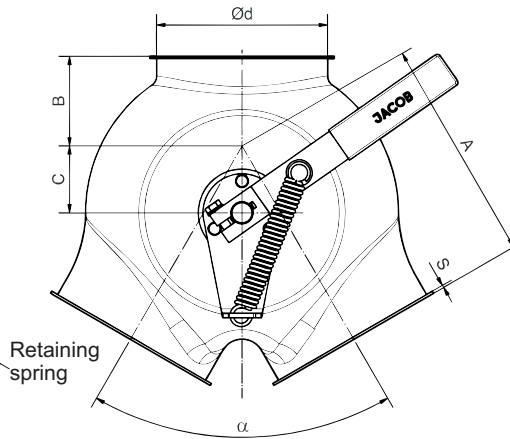


Folding box, asymmetrical



Folding box, symmetrical



Example: Two-way valves with inlet collar 50°, symmetrical, construction DN > 300 mm with welded flanges, pneumatically operated with a rotary actuator

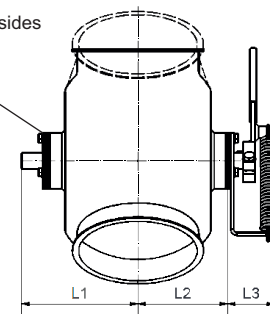
Installation position:

Only mount in the drawn installation position

Areas of application:

For gravity conveying of free-flowing – without backlog – non-glutinous, granular bulk goods. With powdery products, especially with over-pressure or under-pressure in the closed outlet, there could be leakages in the closed outlet. Only limited use in ventilation plants is recommended due to the absence of an inner flap seal. The product flow is by the inlet collar directing the product towards the centre of the flap, and in the outlet by covering the U-shaped inner flap towards the next pipe that follows.

shaft seal on both sides with double V-ring quality NBR



DN > 200 mm with additional lever lock, DN 350 and 400 mm without tension spring

Folding box must not be switched in the product stream

DN>300 Inlet and outlets with welded flange

Pipe diameter tolerance and roundness tolerance to DIN EN 10296-1
Lengths and angles – DIN ISO 2768-1 – Tolerance class V

* 1=powder-coated, 3=stainless steel

Pipe		Ø 100	Ø 120	Ø 150		Ø 175		Ø 200	
symmetrical version	Articel-no.	1210*502	1212*502	1215*502	13151502	1217*502	13171502	1220*502	13201502
	A	135	160	200		218		265	
	B	50	50	80	60	63	75	110	
	C	41	54	60	60	75	75	70	
asymmetrische version	Articel-no.	1210*512	1212*512	1215*512	13151512	1217*512	13171512	1220*512	13201512
	A	135	160	200		218		265	
	B	65	70	100	60	90	75	145	
	C	41	54	60	60	75	75	70	
F	200	230	300		308		410		
alpha	60°	60°	60°		60°		60°		
Ø d	99	119	149	148	174	173	199	198	
S	2	2	2	3	2	3	2	3	
L1	118	129	146		159		178		
L2	88	99	116		129		148		
L3	60	60	60		60		60		
Pipe		Ø 250		Ø 300		Ø 350		Ø 400	
symmetrical version	Articel-no.	1225*502	13251502	1230*502	13301502	1235*502	13351502	1240*502	13401502
	A	305		385		520		580	
	B	115		145		95		105	
	C	82		110		185		195	
asymmetrische version	Articel-no.	1225*512	13251512	1230*512	13301512	1235*512	13351512	1240*512	13401512
	A	305		385		520		580	
	B	155		190		150		170	
	C	82		110		185		195	
F	460		575		670		750		
alpha	60°		60°		50°		50°		
Ø d	249	248	299	298	349	348	398	396	
S	2	3	2	3	2	3	2	3	
L1	199		225		345		378		
L2	169		195		300		333		
L3	60		60		90		90		

Denomination:

**Two-way valve with inlet collar
hand-operated**

Date: 04/20

Datasheet-no. 9/1

Rev. 0