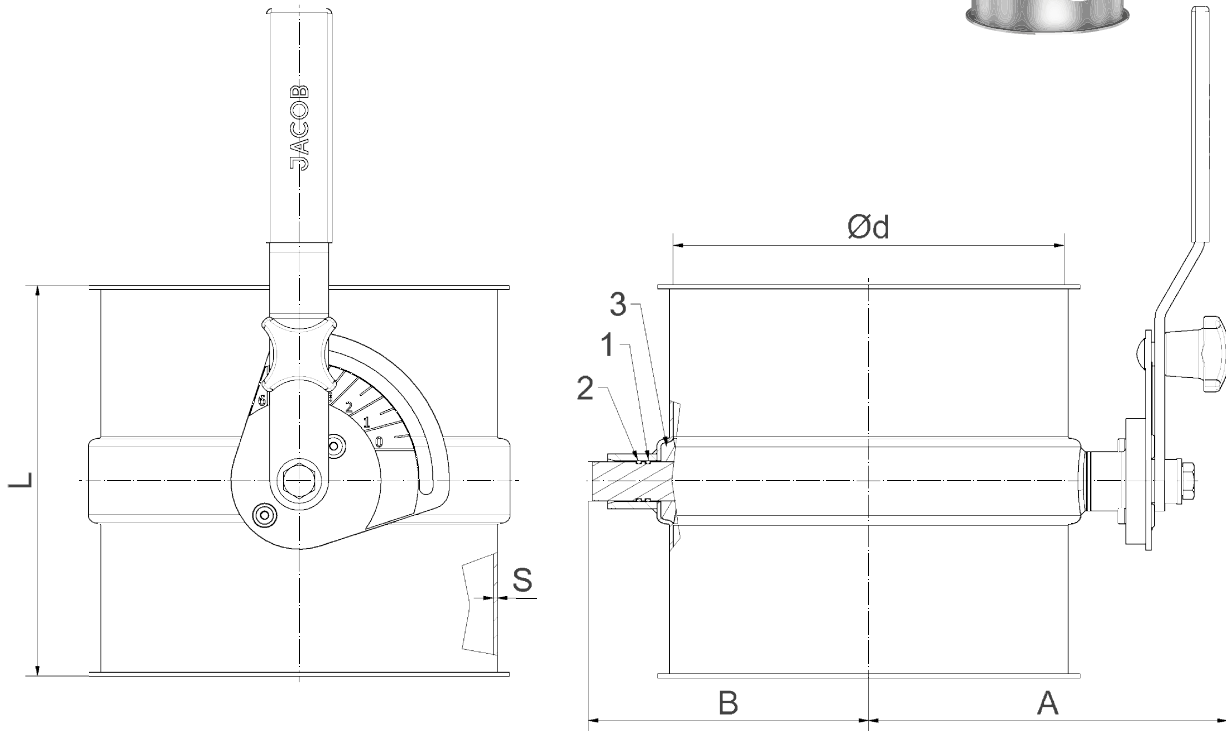


1. O-ring qual. Viton
2. O-ring qual. EPDM-conducting

Flap-position = Lever position



Pipe diameter tolerance and roundness tolerance to DIN EN 10296-1
Lengths and angles – DIN ISO 2768-1 – Tolerance class V

* 1=powder-coated, 3=stainless steel

| Pipe | Ø 60 | Ø 80 | Ø 100 | Ø 120 | Ø 140 | Ø 150 | Ø 160 | Ø 175 |
|--------------|----------|----------|----------|----------|----------|----------|----------|----------|
| Article-no. | - | 1208*577 | 1210*577 | 1212*577 | 1214*577 | 1215*577 | 1216*577 | 1217*577 |
| Ø d | - | 77 | 99 | 119 | 135 | 149 | 159 | 174 |
| A | - | 121 | 133 | 143 | 151 | 158 | 162 | 170 |
| B | - | 83 | 93 | 103 | 111 | 116 | 123 | 131 |
| L | - | 100 | 100 | 120 | 140 | 150 | 160 | 175 |
| S | - | 2 | 2 | 2 | 2 | 2 | 2 | 2 |
| Weight in kg | - | 1,80 | 2,20 | 2,60 | 2,90 | 3,20 | 3,50 | 3,90 |
| Pipe | Ø 200 | Ø 224 | Ø 250 | Ø 280 | Ø 300 | Ø 315 | Ø 350 | Ø 400 |
| Article-no. | 1220*577 | 1222*577 | 1225*577 | 1228*577 | 1230*577 | 1231*577 | 1235*577 | 1235*577 |
| Ø d | 199 | 219 | 249 | 276 | 299 | 311 | 349 | 398 |
| A | 183 | 193 | 208 | 222 | 233 | 272 | 291 | 316 |
| B | 143 | 153 | 168 | 182 | 193 | 220 | 239 | 264 |
| L | 200 | 200 | 200 | 200 | 200 | 200 | 200 | 200 |
| S | 2 | 2 | 2 | 2 | 2 | 2 | 2 | 2 |
| Weight in kg | 4,60 | 5,10 | 5,80 | 6,40 | 7,22 | 10,50 | 12,00 | 14,20 |

Denomination:

**Throttle valves with seal
hand-operated**

Date: 07/24

Datasheet-no. 8/6

Rev. 3