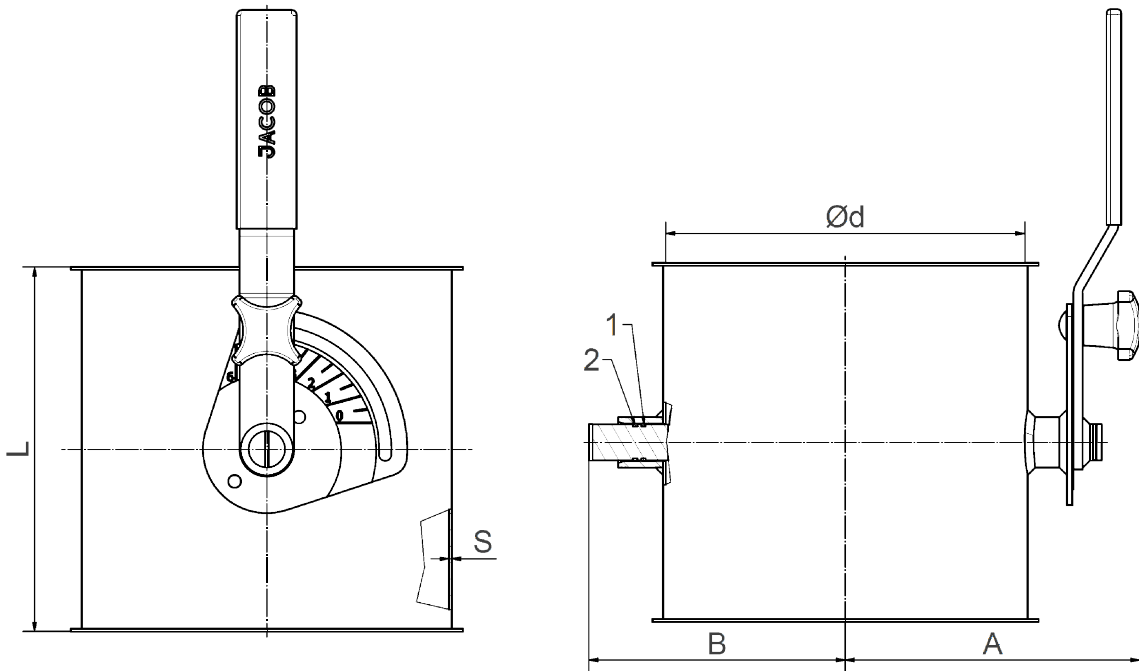


1. O-ring qual. Viton
2. O-ring qual. EPDM-conducting

Flap-position = Lever position



Pipe diameter tolerance and roundness tolerance to DIN EN 10296-1  
Lengths and angles – DIN ISO 2768-1 – Tolerance class V  
\* 1=powder-coated, 2=galvanised( not DN60), 3=stainless steel

Pipe	Ø 60	Ø 80	Ø 100		Ø 120		Ø 140	Ø 150		Ø 160		Ø 175	
Article-no.	1106*566	1108*566	1110*560	12103560	1112*560	12123560	1114*560	1115*560	12153560	1116*560	12163560	1117*560	12173560
Ø d	57	77	100	99	120	119	136	150	149	159	158	175	174
A	79	90	101		124		132	139		144		152	
B	63	74	85		103		111	118		123		130	
L	60	100	100		120		140	150		160		175	
S	1,5	1,5	1,5	2	1,5	2	1,5	1,5	2	1,5	2	1,5	2
Weight in kg	0,70	0,90	1,10	1,10	1,90	1,90	2,20	2,40	2,40	2,70	2,90	3,00	3,00
Pipe	Ø 200		Ø 224	Ø 250		Ø 280	Ø 300		Ø 315	Ø 350	Ø 400	Ø	Ø
Article-no.	1120*560	12203560	1122*560	1125*560	12253560	1128*560	1130*560	12303560	1131*560	1135*560	1140*560	-	-
Ø d	200	199	220	250	249	277	300	299	312	350	399	-	-
A	164		174	189		203	214		220	239	264	-	-
B	143		153	168		181	193		199	218	242	-	-
L	200		200	200		200	200		200	200	200	-	-
S	1,5	2	1,5	1,5	2	2	1,5	2	2	2	2	-	-
Weight in kg	3,50	3,50	3,90	4,50	4,50	5,00	5,50	5,50	6,50	7,50	9,00	-	-

Denomination:

**Throttle valves  
hand-operated**

Date: 07/24

Datasheet-no. 8/1

Rev. 1