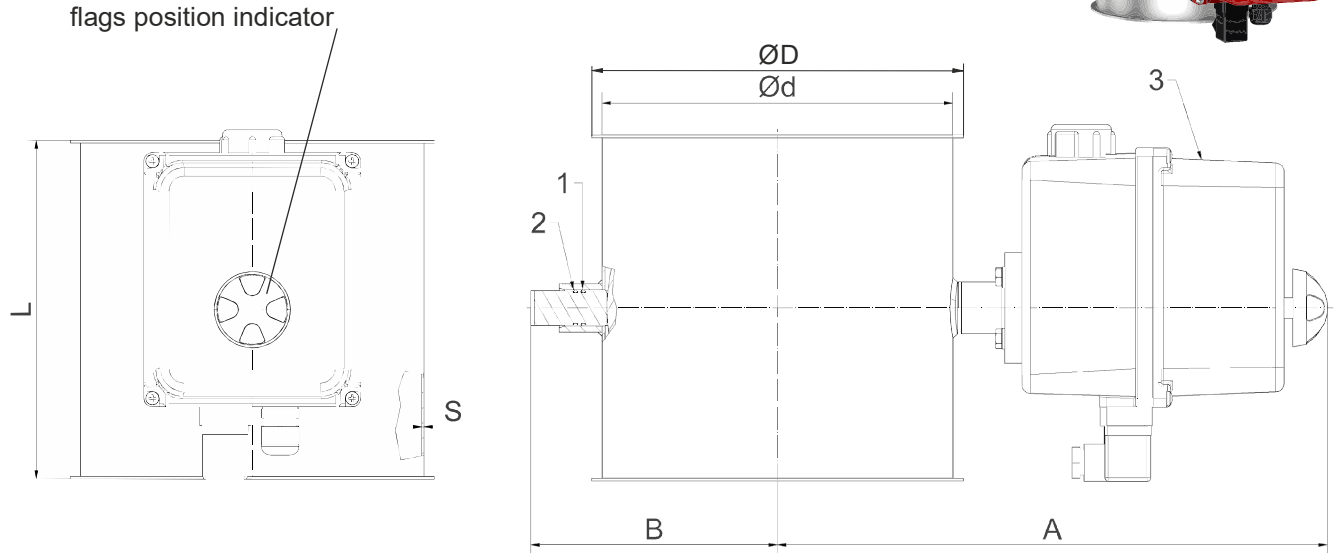
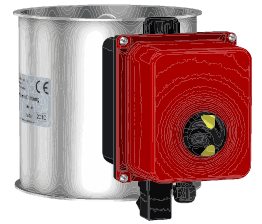


1. O-ring qual. Viton
2. O-ring qual. EPDM-conducting
3. electr. rotary drive operating-time approx. 15 s < Ø300,
> Ø300 24 s with 4 adjustable limit-switches 5A/ 250V



Pipe diameter tolerance and roundness tolerance to DIN EN 10296-1
Lengths and angles – DIN ISO 2768-1 – Tolerance class V
* 5=powder-coated, 6=stainless steel

Pipe	Ø 60	Ø 80	Ø 100	Ø 120	Ø 140	Ø 150	Ø 160	Ø 175
Article-no.	*6620607	*6620807	*6621007	*6621207	*8521407	*8521507	*8521607	*8521707
Ø d	57	77	99	119	135	149	159	174
Ø D	72	92	115	135	151	165	175	190
A	239	250	261	278	286	292	297	305
B	63	74	85	103	111	118	123	130
L	60	100	100	120	140	150	160	175
S	1,5	1,5	1,5	1,5	1,5	1,5	1,5	1,5
Weight in kg	2,80	3,00	3,20	3,70	4,00	4,20	4,50	4,70
Pipe	Ø 200	Ø 224	Ø 250	Ø 280	Ø 300	Ø 315	Ø 350	Ø 400
Article-no.	*8522007	*8522207	*8522507	*8522807	*8523007	*8523107	*8523507	*8524007
Ø d	199	219	249	276	299	311	349	398
Ø D	215	235	265	292	315	327	365	414
A	318	328	343	356	368	374	393	417
B	143	153	168	181	193	199	218	242
L	200	200	200	200	200	200	200	200
S	1,5	1,5	1,5	1,5	1,5	2	2	2
Weight in kg	5,30	5,70	6,30	6,80	7,30	8,40	9,40	10,80

<p>In case of placing your order please state the desired signal-current. Please take notice of the following no.-code. The 2-digit number has to be added to 8-digit article-no. code.</p>	<table border="0" style="width: 100%;"> <tr> <td style="text-align: right;">Make</td> <td style="text-align: right;">Signal-current</td> </tr> <tr> <td>.....73 AIR TORQUE Adjustable drive</td> <td>230V, AC AIR</td> </tr> <tr> <td>.....74 TORQUE Adjustable drive</td> <td>24V, AC/DC</td> </tr> </table>	Make	Signal-current73 AIR TORQUE Adjustable drive	230V, AC AIR74 TORQUE Adjustable drive	24V, AC/DC
Make	Signal-current						
.....73 AIR TORQUE Adjustable drive	230V, AC AIR						
.....74 TORQUE Adjustable drive	24V, AC/DC						

Denomination: <h2 style="text-align: center;">Throttle valves</h2> <p style="text-align: center;">with electrically-operated adjustable drive</p>	Date: 07/24 Datasheet-no. 8/5 Rev. 1
--	--