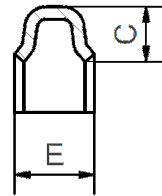


Pull ring profile



Screw Connection

- If necessary, correct the screw presetting
- Adjustment option to increase the connection strength and the tightness
- When using explosion pressure shock resistance 3bar required screw torque $M_a = 10 \text{ Nm}$

* 2=galvanized, 3= stainless Steel

Pipe	Ø 80	Ø 100	Ø 120	Ø 140	Ø 150	Ø 160	Ø 175	Ø 200
Article-no.	1208*903	1210*903	1212*903	1214*903	1215*903	1216*903	1217*903	1220*903
Ø A	100	123	143	159	173	187	198	223
Ø B	80	103	123	139	153	164	178	203
C	9	9	9	9,6	9,5	9,5	9,5	9,5
E	14	14	14	14,5	14,5	14,5	14,5	14,5
weight in kg	0,35	0,37	0,40	0,45	0,47	0,48	0,49	0,51
Pipe	Ø 224	Ø 250	Ø 280	Ø 300	Ø 315	Ø 350	Ø 400	Ø 450
Article-no.	1222*903	1225*903	1228*903	1230*903	1231*903	1235*903	1240*903	1245*903
Ø A	243	273	301	323	336	373	423	472
Ø B	223	253	281	303	316	353	403	450
C	9,5	9,5	9,5	9,5	9,5	9,5	9,5	9,5
E	14,5	14,5	14,5	14,5	14,5	14,5	14,5	14,5
weight in kg	0,55	0,58	0,61	0,62	0,63	0,68	0,74	0,79

Denomination:

Quick Connect pull-rings

Date: 07/24

Datasheet-no. 2/1

Rev. 0